

# MONTHLY MEMBERSHIP PROGRESS REPORT

LOCATION INDIA

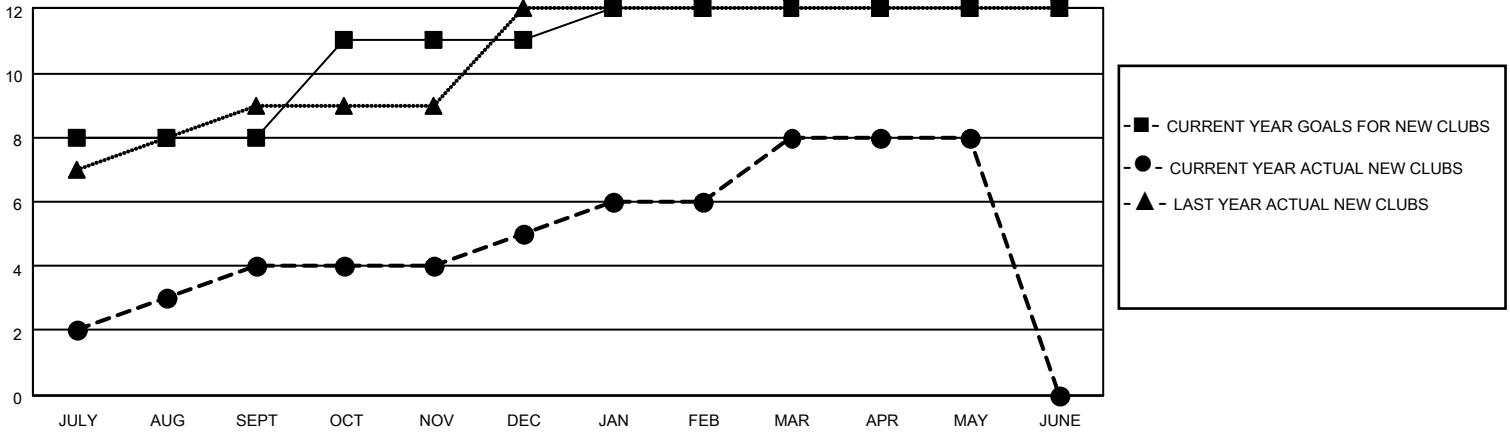
District 322 G

Results as of: 5/31/2023

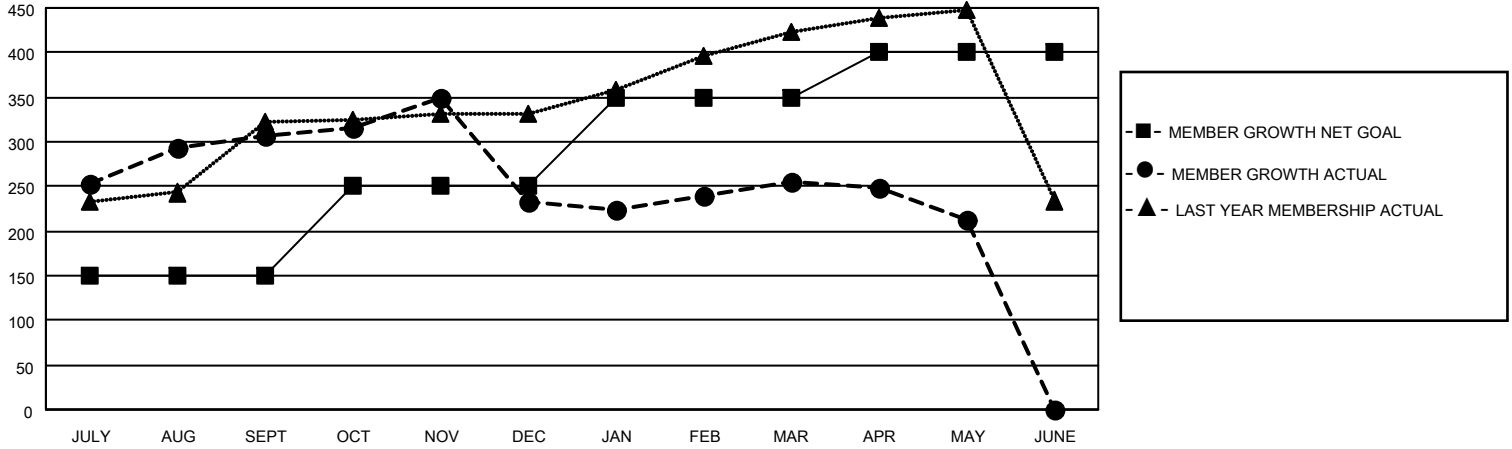
Clubs			
RESULTS FOR 2022-2023			
QUARTER	NEW CLUB GOAL	NEW CLUBS	DROPPED CLUBS
JULY/AUG/SEPT	8	4	3
OCT/NOV/DEC	3	1	5
JAN/FEB/MAR	1	3	3
APR/MAY/JUNE	0	0	1

Members			
RESULTS FOR 2022-2023			
QUARTER	MEMBER GROWTH NET GOAL	MEMBER GROWTH ACTUAL	DROPPED MEMBERS ACTUAL (including transfers)
JULY/AUG/SEPT	150	476	137
OCT/NOV/DEC	100	172	231
JAN/FEB/MAR	100	123	99
APR/MAY/JUNE	50	59	72

**GOALS AND ACTUAL NEW CLUBS CUMULATIVE**



**GOALS AND ACTUAL MEMBERS CUMULATIVE**



**DROPPED CLUBS: 12**

**64 CLUBS OF 95 ADDED 1 OR MORE NEW MEMBERS**

**GENDER DISTRIBUTION**

MALE	2,368 (61.27%)
FEMALE	1,496 (38.71%)
NON BINARY	0 (0.00%)
PREFER NOT TO ANSWER	1 (0.03%)

**DROPPED MEMBERS**

[CLICK HERE FOR CUMULATIVE MEMBERSHIP DATA](#)

DECEASED	13
CLUB CANCELLED	156
OTHER	370
<b>TOTAL</b>	<b>539</b>

TOTAL FAMILY UNIT MEMBERS 1,951

FAMILY MEMBERS PAYING HALF DUES 1,110